

7HO010356 DE-SU WATSON\*TR\*TV\*TL\*TD\*TY

# Watson

## HE'S GOT IT ALL!

- HIGH RELIABILITY TPI LEADER – OVER 2100 GTPI
- EXCELLENT COMPONENTS, TYPE AND CALVING EASE
- MODERATE-SIZED COWS WITH QUALITY UDDERS
- **GREAT FERTILITY AND SIRE CONCEPTION RATE SIRE**

FERTILITY + 



WORLD WIDE INDEXES • [WWW.WVSIRE.COM](http://WWW.WVSIRE.COM)



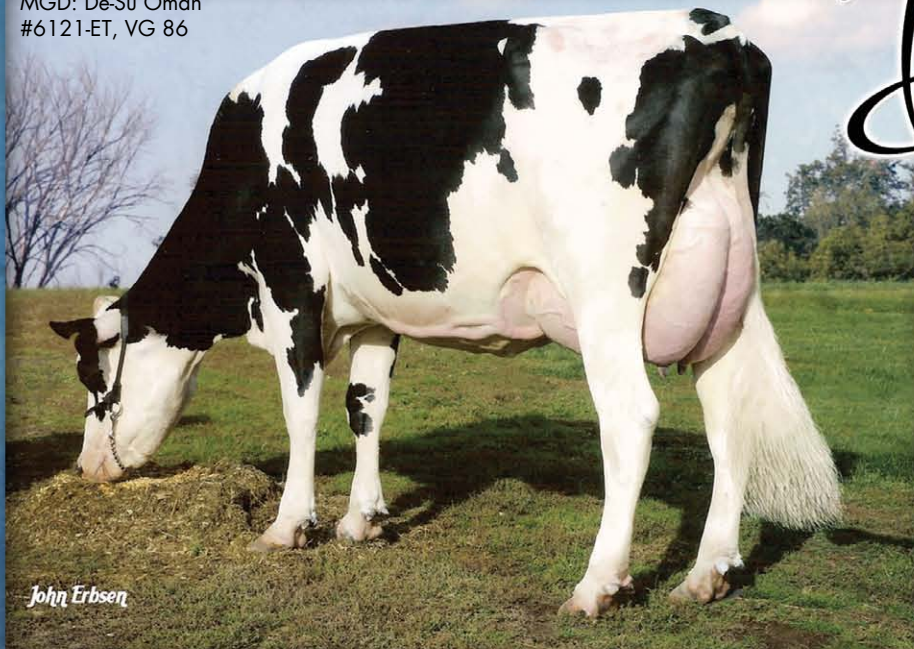
Preston Watson #3390

© Jenny Thomas  
Light Photography

# FROM THE HEART OF

# De-Su

MGD: De-Su Oman  
#6121-ET, VG 86

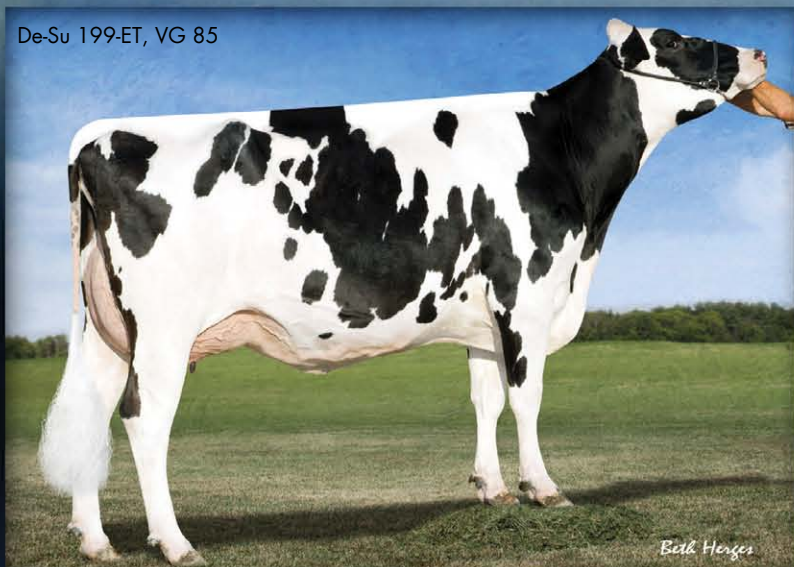


John Erbsen

- GREAT PRODUCTIVE LIFE
- CALVING EASE SPECIALIST
- EXCEPTIONALLY STRONG UDDER ATTACHMENTS
- EXCELS IN DAIRY STRENGTH

## DE-SU OMAN 6121-ET COW FAMILY

De-Su 199-ET, VG 85



Beck Herzes

De-Su #192-ET, VG 85



John Erbsen

# Watson

### BOLIVER X SHOTTLE X O MAN X BW MARSHALL X PATRON X LEADMAN

Dam: De-Su 7045-ET, VG 87

3-04 3X 365D 15,064 kgM 3.5% 526 kgF 3.1% 468 kgP

MGD: De-Su Oman 6121-ET, VG 86 GMD DOM

2-01 3X 365D 15,805 kgM 4.3% 684 kgF 3.4% 534 kgP

MGGD: De-Su BW Marshall Georgia, EX 90 GMD DOM



**WORLD WIDE SIRES, LTD.**<sup>®</sup>

www.wwsires.com • Email: info@wwsires.com • Tel: 559.622.2222 • Fax: 559.741.2828



Product of the USA  
Watson/133