

*Extreme udder  
improver!*

*Combines very high  
type with positive  
components and the  
calving ease advantage*



# DECKER

14HO4056 Far-O-La Debbi-Jo Decker-ET \*TV\*TL-

Udders:

Hendel Decker Natali #1799

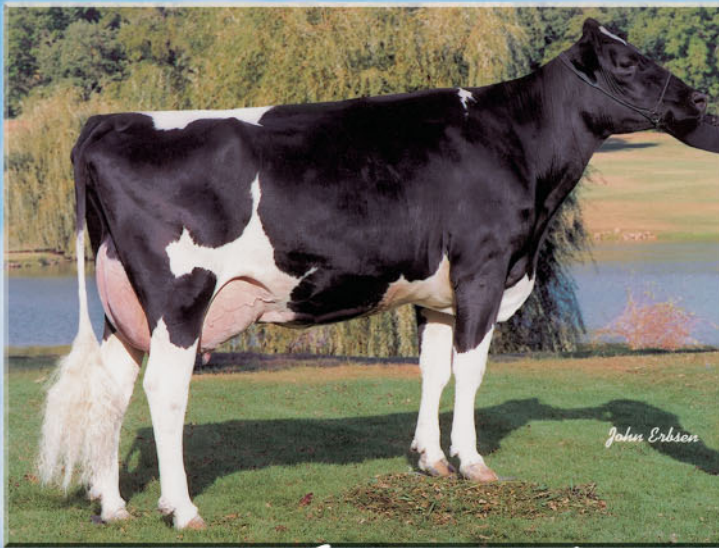
Hendel Decker McKena #1801

Below:

Echeverria Decker #5743



WORLD WIDE INDEXES • [WWW.WWSIRES.COM](http://WWW.WWSIRES.COM)

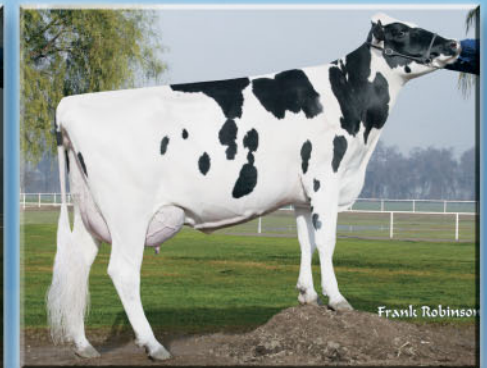


This family has proven time and again its ability to transmit exceptional type with consistent results! One look at Decker's impressive udder linear will have you convinced:

**PHYSICAL TRAIT EVALUATION**

Source : HA 02/06		23 dtrs. 18 herds	
UDC	Low		3.47 High
Fore Udder	Loose		2.96 Strong
Rear Udder Height	Low		4.09 High
Rear Udder Width	Narrow		3.54 Wide
Suspensory Ligament	Weak		4.55 Strong
Udder Depth	Deep		3.02 Shallow
Teats (Rear View)	Wide		3.47 Close
Teat Length	Short		0.86 Long

*Straight from the Debbie-Jo, Dolly and Dellia maternal line.*



At top, Decker's Dam: Regancrest Debbie-Jo-ET, EX 92

Daughters, left to right:  
Fly-Higher Decker Tonya, GP 83  
Foster Decker #2482  
Foster Decker #2318

Decker sires udders that are undeniably great—

- high, wide rear udders
- extremely strong attachments
- shallow depth and close teat placement
- deep udder cleft

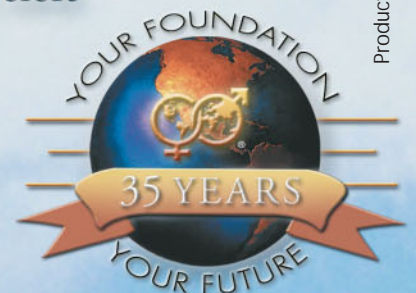
# DECKER

**BW MARSHALL X PATRON X LEADMAN X MARK**

**Dam:** Regancrest Debbie-Jo-ET, EX 92  
5-04 365d 20,500 kgM 4.2% 858 kgF 3.0% 615 kgP  
**MGD:** Regancrest Leadman Dolly-ET, EX 90  
3-02 365d 13,305 kgM 4.1% 545 kgF 3.1% 416 kgP  
**MGGD:** Snow-N Denises Dellia, EX 95-2E  
7-06 365d 16,186 kgM 4.0% 650 kgF 2.9% 470 kgP

**WORLD WIDE SIRES, LTD.®**

www.wwsires.com • Email: info@wwsires.com • Tel: 559.622.2222 • Fax: 559.741.2828



Product of the U.S.A.

Decker/061